



Joke of the day: I'm friends with 25 letters of the alphabet.
I don't know why.

Wednesday again already! I have been so impressed with all of the street art pictures I have seen. Well done for working so hard on them.

Warm-up activity:

Which of these statements are true and which are false?

This might take you a while, but I know there are quite a few of you who like to have a challenge to do! (You can use a calculator if you would like to.)

There are 604800 seconds in a week.

The sum of the first 10 square numbers is 385.

A square is also a rectangle.

Multiplying a value by a whole number makes it bigger.

The numbers from 1 to 20 add up to 210.

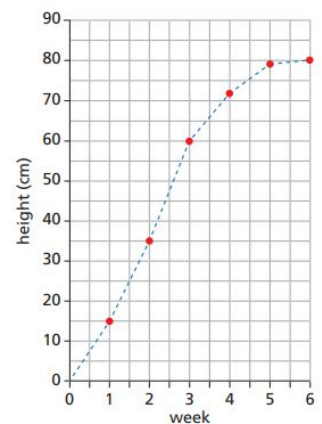
Maths: Line Graphs

For maths today, you need to interpret line graphs to answer questions. If you need a reminder, you can watch the video below:

<https://www.youtube.com/watch?v=x9dfsti25HY> It is presented by a rather jolly Australian who revisits how to answer questions by finding the right place on the axis.

Remember to check the scale on the y axis when you are finding an answer. (For example, does it go up in 5's or 10's?) The first part of question 4 might not be clear to you at first look, but it is just asking you to think about what you know about the amount of energy used, by looking at what happens to the line throughout the year.

The sheet with the questions on and the answer sheet is in Google Classroom.



English - Writing a Debate Argument

For your English learning today, you are going to be learning how to write a strong argument to help you think more about writing a balanced argument. You need to click on the link below which takes you to a BBC Bitesize lesson with some teaching videos and activities. For the second activity, you can either write your powerful argument on paper or create a Google Document and share it with me.

Try reading your argument to a family member to see if they think it is powerful and persuasive. (You do not need to do activity three.)

<https://www.bbc.co.uk/bitesize/articles/zhmdjhv>



P.E. - Remember to do some physical activity today. You should be aiming to be physically active for an average of 60 minutes every day.

Spelling: practising 'ei' words

Please go on to the Spelling Frame website and practise the words on the link below. These are words that are particularly hard to remember how to spell because of their 'ei' sound.



<https://spellingframe.co.uk/spelling-rule/38/45-Words-with-the-sound-spelt-ei-after-c>

Art: Expressing ideas through a piece of art

For our last art session this week, you are going to be thinking about how an artist uses their art to express their ideas or send a message. Banksy is one street artist who regularly uses his art to send a message about things he thinks is wrong with society or politics.



You need to start by going through the slides on Google Classroom looking at street art that spreads a message. (The slides are called: Art - Expressing Ideas.)

Then, you need to think about a message you would like to share through a piece of art, or an idea you would like to express. This could be something to do with the pandemic such as a piece of art saying thank you to the NHS, or some art that encourages people to follow social distancing rules. Or it could be a piece of art that shows how you feel about bullying, pollution, homelessness or war.

The key thing is that your art needs to share a message or express your ideas about a big issue. It can just be a picture or it could have words on too.

Class book. The next few chapters will already be on Google Classroom.
Things are getting worse for Alfie, Aiden and Roxy...

