



Coelho Class News - Mrs Slater/Mrs Skelton

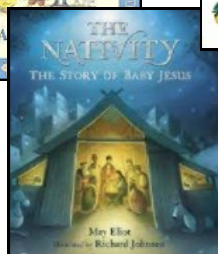
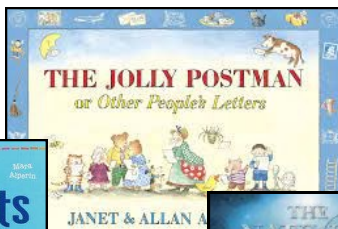
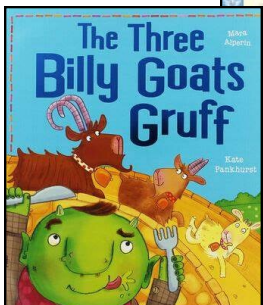
What we are learning...

Topic:

This half term our topic is *The Great, The Bold and The Brave*. In History we will be learning about the Battle of Towton. In Design and Technology we will be making a shelter for soldiers. In Science we will be learning about different materials and investigating which would be the strongest material to make a bridge for The Three Billy Goats Gruff.

English:

Our focus books are: *The Three Billy Goats Gruff*, *The Jolly Postman*, *The Nativity* and *The Usborne Book of Christmas Poems*.



Writing:

We will be retelling the story of *The Three Billy Goats Gruff* and writing a recount of the Battle of Towton, making a letter and creating our own Christmas poems.

Our values

Thankfulness and respect
To appreciate the beauty and bounty of the world around us and to value the families, gifts and opportunities that we have been given.

Maths:

In maths we will be looking at addition and subtraction within 10 and place value within 20. Please encourage your child to use Numbots at home as it helps support the learning we are doing at school, especially their recall of number bonds.

Dates for your diary:

5.12.22 - Non uniform day and please bring in a donation of chocolate for the Chocolate Tombola.

7.12.22 2.-3pm - KS1 Nativity

8.12.22 9:30-10:30am - KS1 Nativity

9.12.22 - Whole school trip to Pantomime

9.12.22 - 3pm Christmas Fair

15.12.22 - Christmas Lunch

16.12.22 - Break up for Christmas Holiday

Phonics:

We will continue to use the Little Wandle phonics scheme. We will be looking at phase 5 sounds. The following link is helpful if you would like to support your child at home:

<https://www.littlewandlelettersandsounds.org.uk/resources/for-parents/>

This half term your child will be sent home a list of all the words from Reception they should know by sight as well as some new tricky words they will be learning this half term. Please help you child practise them.

Spellings:

Please encourage your child to practise their spellings on Spelling Shed. If you need support with logging on please let me know.